

ASHLEY GLEN

LEGEND

-  Ashley Glen MPUD Boundary
-  Existing Wetlands
-  Category 1 Wetlands
-  Parcel Number
-  County Vision Plan Roads

2008 Parcel Boundaries from Pasco County Property Appraiser GIS data
 2008 Aerial photograph from Aerials Express
 May 31, 2006 Pasco County Highway Vision Plan

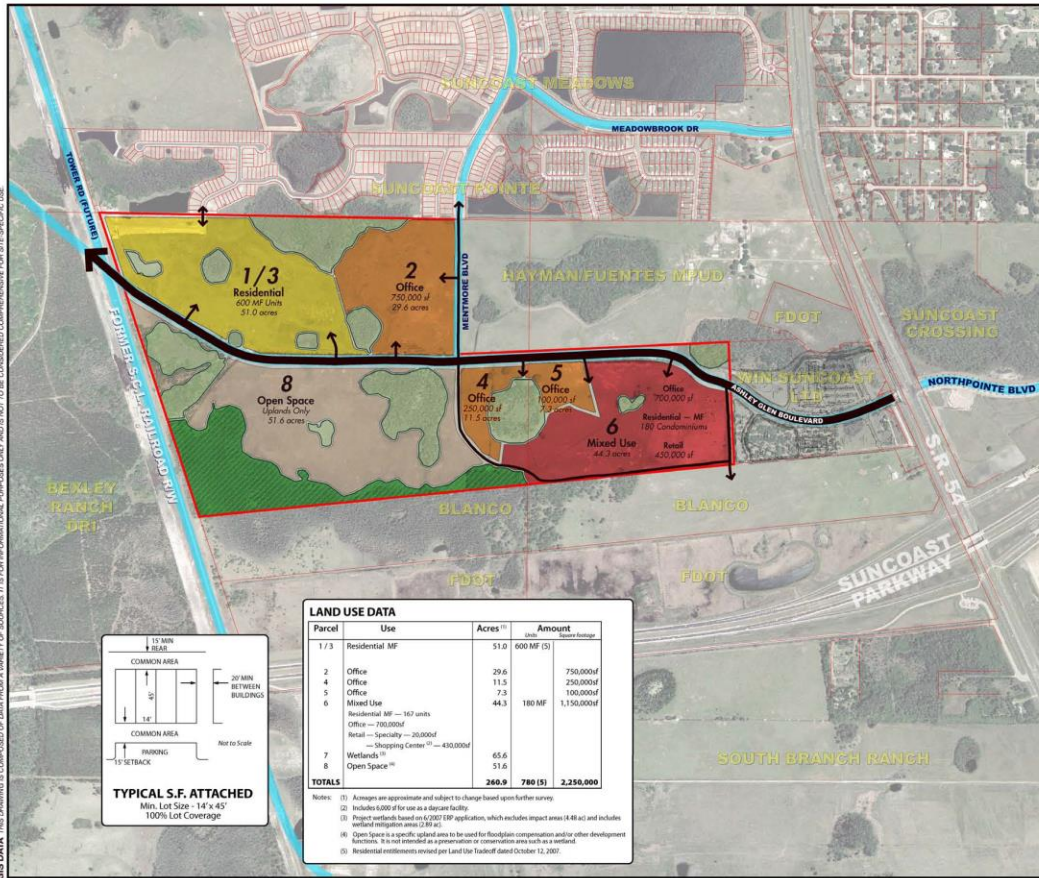


FLORIDA DESIGN CONSULTANTS, INC.
 PLANNING & DESIGN SERVICES

June 2007 Revised October 17, 2007

MPUD Master Development Plan

FINAL MPUD Figure 9



Executive Summary

Ashely Glen

This site is located in Pasco County at the junction of State Road 54 and the Suncoast Highway

Purchased as vacant land, entitled for DRI (Completed in 14 months) 400 multi-family, 2,000,000 sq. ft. office, 300,000 sq. ft. retail

The site is accessible directly on State Road 54

260 Acres

AC (Agricultural Conservation) DRI as above

Sewer and Water

Purchased